



# MCON SUPER TUFF TEXTURE

TRUSTED PARTNER IN CONSTRUCTION CHEMICALS

# MCON RASAYAN

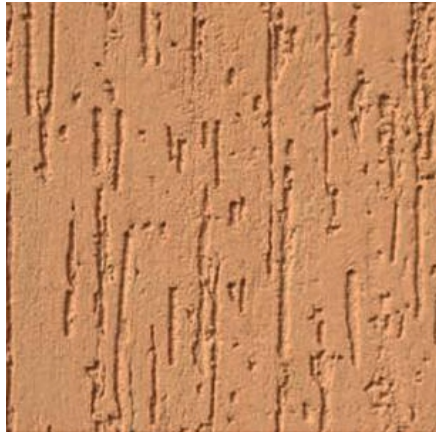
An ISO 9001 Company Having A Range Of Construction Chemicals  
And Finishing Products. Our Certain Products Have Also Been  
CE Certified To Ensure Indian Product With European Quality Standards.





## **MCON SUPER TUFF**

Texture coating for external walls



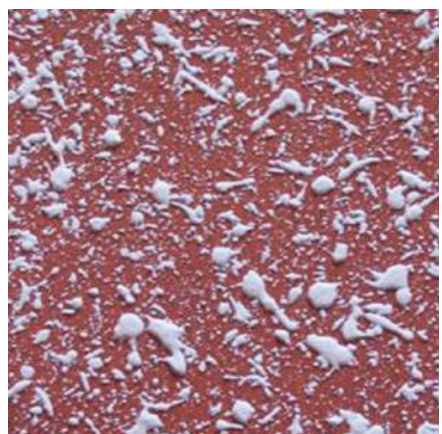
**RUFF TUFF 1**



**RUFF TUFF 2**



**RUST LOOK**



**SPRAY BUBBLE**



## **MCON SUPER TUFF**

Texture coating for external walls



**DHOLPUR**



**PARLINA**



**SUPER FINE**



**BASE COAT**

**MCON RASAYAN INDIA LTD.** is a decade old company in the field of Civil Engineering and Construction Chemicals. Mcon Rasayan has maintained the highest level of Quality and Consistency by following Systems of ISO and is an ISO Certified Company.

The mission of the company is to give Innovative products to the Construction Industry at Affordable prices with strong service support. Mcon Rasayan has always worked on the theme of "World Class Innovative Products with Consistent Customer Satisfaction", which has made MCON Rasayan the Trusted Partner in Construction Chemicals. In alignment with the mission we have one more product to decorate your External walls with this amazing decorative anti fungal protection textures – MCON Super TUFF – Premium Quality Textures.

**MCON SUPER TUFF** is a textured finish comprised of high quality exterior durable acrylic modified resin specially designed as intermediate coating. Its unique textured pattern has a distinctive appeal comprising of cement, graded sand and special additives. It is convenient, easy to use, Strong and binds better to its substrate.

- Forms a hard texture body that is excellent against abrasion and scratch
- Hides Cracks- It hides surface undulations and fine surface cracks.  
Tough Textured - the tough textured finish lasts for long and ensures low maintenance.  
UV Resistance - It has excellent UV resistance and adhesion.
- Anti- algae - Resists fungus and algae growth, when applied as a system with the recommended top coat.
- Factory made product with consistent quality.
- No water curing is required at site.
- Ready to use

## PROPERTIES

<b>Drying Time</b>	<b>Surface dry in 30 to 60 minutes</b>
<b>Aggregate</b>	<b>Graded Silica</b>
<b>Basic Binder</b>	<b>Arcylic Polymer</b>
<b>Additives</b>	<b>Polymer additives</b>
<b>Packing</b>	<b>30kgs. HDPE Bag</b>
<b>Coverage</b>	<b>85 to 90 sq. ft. @1.5 mm thickness for 30kg. bag</b> <b>75 to 80 sq. ft. @2.0 mm thickness for 30kg. bag</b>

## OUR PRODUCT RANGE

- ADMIXTURES ● TILE ADHESIVES & GROUTS ● WATERPROOFING SYSTEMS
- WALL FINISHES & PAINTS ● READYMIX MORTARS ● CONCRETE REPAIRS
- ENGINEERING GROUTS & INDUSTRIAL FLOORINGS ● ANTI CORROSIVE SYSTEMS
- CONCRETE ESSENTIALS



MANUFACTURED & MARKETED BY  
**MCON RASAYAN INDIA LTD.**

**TRUSTED PARTNER IN CONSTRUCTION CHEMICALS**

**REGISTER OFFICE :** 101/A, Maxheal House, Bangur Nagar, Goregaon West, Mumbai - 400104.

**CORPORATE OFFICE :** Gala No. 6, Bardanwala Estate, Bandivali Hill Road, Jogeshwari West, Mumbai - 400102.

**CONTACT :** 022 - 26790031/+91 89769 07887

**FACTORY :** Unit I - Survey No. 2084/2, Ambhethi, Koparli Road, Tal. Kaprada, Dist. Valsad, Gujarat - 396191.  
Unit II - Plot No - 801, GIDC, Sarigam, Dist. Valsad, Gujarat - 396155.

**VISIT US :** [www.mconrasayan.com](http://www.mconrasayan.com) **FOLLOW US :** [info@mconrasayan.com](mailto:info@mconrasayan.com)



\*Disclaimer All Shades Shown in Shade card are only for reference, actual shade are liable to differ as the material of printing is different. It is advised to do sample on site of desired shade for actual appearance.